

SUN PHARMACEUTICAL

CMP (Rs)	BUY RANGE (Rs)	SL BELOW (Rs)	1 MONTH TARGET (Rs)
531	531-536	500 CB	575 / 600



- Stock has given strong breakout from its falling channel pattern on monthly chart which can be consider as strong reversal pattern by nature
- Also on weekly chart stock has given bullish pennant breakout and on daily chart stock has move out of its range
- Substantial volume activity is witnessed at the time of breakout which strongly support the breakouts

UPL

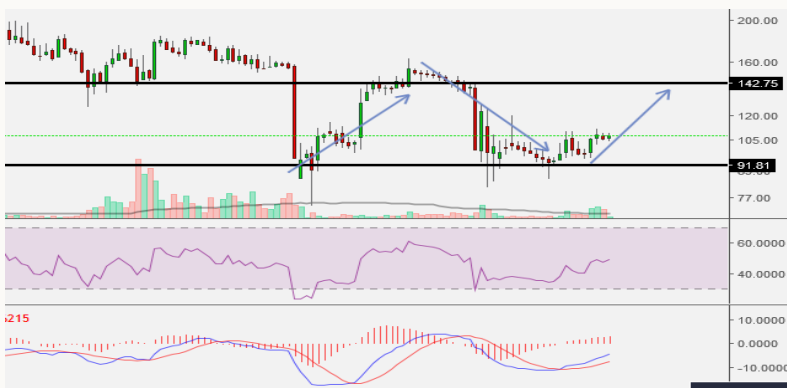
CMP (Rs)	BUY RANGE (Rs)	SL BELOW (Rs)	1 MONTH TARGET (Rs)
478	478-482	452 CB	512/530



- Stock is trading in clearly higher top higher bottom formation on daily chart
- Also stock has witnessed fresh breakout with good volume
- Both the momentum indicator RSI and MACD are ranging in positive territory

BLISS GVS PHARMA

CMP (Rs)	BUY RANGE (Rs)	SL BELOW (Rs)	1 MONTH TARGET (Rs)
107	107-108.5	102 CB	114/119



- On weekly chart stock is trading in strong range and prices showing bounce after touching its lower band
- Volume activity also increasing with increasing price which is again support the structure
- Both RSI and MACD are showing strength

LKP Trilogy for the month July 2020 performance

Name	Reco	Date	CMP	Buy in Range	SL	Target	Bought @	Sold @	Capital Invested	P/L (%)	P/L	Comments
HDFC life Insurance	Buy	1-Jul	549	549-555	518	585 / 605	549	586	1,00,000	6.74%	6,740	*2nd Target hit
MARICO	Buy	1-Jul	352	352-355	300	365 / 375	352	356	1,00,000	1.14%	1,136	* Closed
Nippon Life India Asset	Buy	1-Jul	314	314-317	294	340 / 355	314	294	1,00,000	-6.37%	(6,369)	SL Hit
TOTAL									3,00,000	0.50%	1,506	
NIFTY		1-Jul	10,302					11,073		7.49%		
OUTPERFORMANCE										-6.99%		

LKP Trilogy for the month June 2020 performance

Name	Reco	Date	CMP	Buy in Range	SL	Target	Bought @	Sold @	Capital Invested	P/L (%)	P/L	Comments
Divi's Laboratories	Buy	1-Jun	2,390	2,390-2,405	2,270	2,550 / 2,600	2,390	2,480	1,00,000	3.77%	3,766	* Closed
ONGC	Buy	1-Jun	83	83 - 84	78	90 / 94	83	89	1,00,000	6.63%	6,627	1st Target hit
SBI Life Insurance	Buy	1-Jun	769	769 - 776	730	820 / 845	769	810	1,00,000	5.33%	5,332	1st Target hit
TOTAL									3,00,000	5.24%	15,724	
NIFTY		1-Jun	9,580					10,302		7.53%		
OUTPERFORMANCE										-2.29%		

LKP Trilogy for the month May 2020 performance

Name	Reco	Date	CMP	Buy in Range	SL	Target	Bought @	Sold @	Capital Invested	P/L (%)	P/L	Comments
Indraprastha Gas	Buy	5-May	470	470 - 474	445	500 / 515	470	496	1,00,000	5.53%	5,532	1st Target hit
Sanofi India	Buy	5-May	8,052	8,052 - 8,100	7,600	8,600 / 8,800	8,052	7,600	1,00,000	-5.61%	(5,614)	SL Hit
SRF	Buy	5-May	3,640	3,640-3,675	3,440	3,900 / 4,000	3,640	3,440	1,00,000	-5.49%	(5,495)	SL Hit
TOTAL									3,00,000	-1.86%	(5,576)	
NIFTY		5-May	9,294					9,580		3.09%		
OUTPERFORMANCE										-4.94%		

LKP Trilogy for the month April 2020 performance

Name	Reco	Date	CMP	Buy in Range	SL	Target	Bought @	Sold @	Capital Invested	P/L (%)	P/L	Comments
IPCA Laboratories	Buy	3-Apr	1,396	1,396 - 1,410	1,310	1,500 / 1,550	1,396	1,550	1,00,000	11.03%	11,032	2nd Target hit
Jubilant Life Sciences	Buy	3-Apr	265	265 - 268	245	290 / 300	265	290	1,00,000	9.25%	9,245	* 2nd Target hit
Nippon Life India AMC	Buy	3-Apr	258	258 - 261	240	280 / 290	258	280	1,00,000	8.33%	8,333	* 2nd Target hit
TOTAL									3,00,000	9.54%	28,610	
NIFTY		3-Apr	8,254					9,860		19.46%		
OUTPERFORMANCE										-9.92%		

* Partial profit booked at lower levels

DISCLAIMERS AND DISCLOSURES

LKP Sec. Ltd. (CIN-L67120MH1994PLC080039, www.lkpsec.com) and its affiliates are a full-fledged, brokerage and financing group. LKP was established in 1992 and is one of India's leading brokerage and distribution house. LKP is a corporate trading member of Bombay Stock Exchange Limited (BSE), National Stock Exchange of India Limited (NSE), MCX Stock Exchange Limited (MCX-SX). LKP along with its subsidiaries offers the most comprehensive avenues for investments and is engaged in the businesses including stock broking (Institutional and retail), merchant banking, commodity broking, depository participant, insurance broking and services rendered in connection with distribution of primary market issues and financial products like mutual funds etc.

LKP hereby declares that it has not defaulted with any stock exchange nor its activities were suspended by any stock exchange with whom it is registered in last five years. However, SEBI and Stock Exchanges have conducted the routine inspection and based on their observations have issued advice letters or levied minor penalty on LKP for certain operational deviations in ordinary/routine course of business. LKP has not been debarred from doing business by any Stock Exchange / SEBI or any other authorities; nor has its certificate of registration been cancelled by SEBI at any point of time.

LKP offers research services to clients. The analyst for this report certifies that all of the views expressed in this report accurately reflect his or her personal views about the subject company or companies and its or their securities, and no part of his or her compensation was, is or will be, directly or indirectly related to specific recommendations or views expressed in this report.

Other disclosures by LKP and its Research Analyst under SEBI (Research Analyst) Regulations, 2014 with reference to the subject company(s) covered in this report:-

Research Analyst or his/her relative's financial interest in the subject company. (NO)

LKP or its associates may have financial interest in the subject company.

LKP or its associates and Research Analyst or his/her relative's does not have any material conflict of interest in the subject company. The research Analyst or research entity (LKP) has not been engaged in market making activity for the subject company.

LKP or its associates may have actual/beneficial ownership of 1% or more securities of the subject company at the end of the month immediately preceding the date of publication of Research Report.

Research Analyst or his/her relatives have actual/beneficial ownership of 1% or more securities of the subject company at the end of the month immediately preceding the date of publication of Research Report: (NO)

LKP or its associates may have received any compensation including for investment banking or merchant banking or brokerage services from the subject company in the past 12 months.

LKP or its associates may have received compensation for products or services other than investment banking or merchant banking or brokerage services from the subject company in the past 12 months.

LKP or its associates may have received any compensation or other benefits from the Subject Company or third party in connection with the research report.

Subject Company may have been client of LKP or its associates during twelve months preceding the date of distribution of the research report and LKP may have co-managed public offering of securities for the subject company in the past twelve months.

Research Analyst has served as officer, director or employee of the subject company: (NO)

LKP and/or its affiliates may seek investment banking or other business from the company or companies that are the subject of this material. Our salespeople, traders, and other professionals may provide oral or written market commentary or trading strategies to our clients that reflect opinions that are contrary to the opinions expressed herein, and our proprietary trading and investing businesses may make investment decisions that may be inconsistent with the recommendations expressed herein.

In reviewing these materials, you should be aware that any or all of the foregoing, among other things, may give rise to real or potential conflicts of interest including but not limited to those stated herein. Additionally, other important information regarding our relationships with the company or companies that are the subject of this material is provided herein. This report is not directed to, or intended for distribution to or use by, any person or entity who is a citizen or resident of or located in any locality, state, country or other jurisdiction where such distribution, publication, availability or use would be contrary to law or regulation or which would subject LKP or its group companies to any registration or licensing requirement within such jurisdiction. Specifically, this document does not constitute an offer to or solicitation to any U.S. person for the purchase or sale of any financial instrument or as an official confirmation of any transaction to any U.S. person.

Unless otherwise stated, this message should not be construed as official confirmation of any transaction. No part of this document may be distributed in Canada or used by private customers in United Kingdom.

All trademarks, service marks and logos used in this report are trademarks or registered trademarks of LKP or its Group Companies. The information contained herein is not intended for publication or distribution or circulation in any manner whatsoever and any unauthorized reading, dissemination, distribution or copying of this communication is prohibited unless otherwise expressly authorized. Please ensure that you have read "Risk Disclosure Document for Capital Market and Derivatives Segments" as prescribed by Securities and Exchange Board of India before investing in Indian Securities Market. In so far as this report includes current or historic information, it is believed to be reliable, although its accuracy and completeness cannot be guaranteed.

All material presented in this report, unless specifically indicated otherwise, is under copyright to LKP. None of the material, nor its content, nor any copy of it, may be altered in any way, transmitted to, copied or distributed to any other party, without the prior express written permission of LKP.