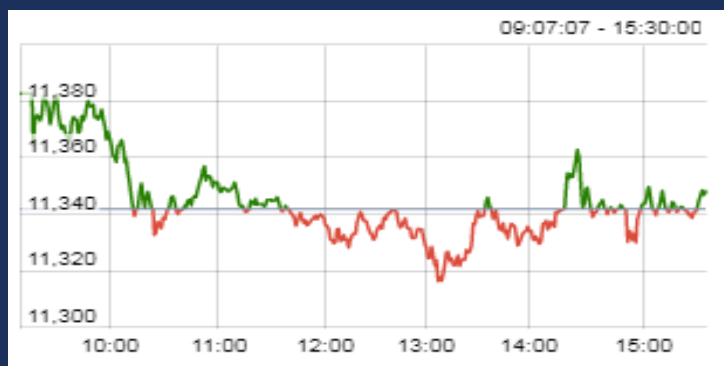


15-Mar-19

Date	Nifty Spot	Nifty Future	Pre / Dis	Nifty Future Curr. expiry OI	Nifty Future Total OI	PCR (OI)	VIX	Most Active Call	Most Active Put	P/E	Nifty P/B
14-Mar	11343	11,382	38.50	1,82,34,750	2,07,57,450	1.51	15.15	11600	11300	27.81	3.58
13-Mar	11342	11,367	24.95	1,80,70,950	2,03,85,975	1.45	15.28	11500	11300	27.80	3.58
<b>Chg</b>	<b>0.01%</b>	<b>0.13%</b>		<b>0.91%</b>	<b>1.82%</b>		<b>-0.85%</b>				

Nifty Options Data is for the expiry 28-Mar-19

## CNX NIFTY



## MARKET OVERVIEW

India Volatility Index (VIX), a gauge for market's short term expectation of volatility decreased by 0.85% and reached 15.15.

Nifty March 2019 futures closed at 11381.75 on Thursday, at a premium of 38.50 points over spot closing of 11343.25.

Nifty April 2019 futures ended at 11436.00, at a premium of 92.75 points over spot closing.

Nifty March futures saw an addition of 0.16 million (mn) units, taking the total outstanding open interest (OI) to 18.23 mn units.

The Nifty Put Call Ratio (PCR) finally stood at 1.51 for March month contract.

The top five scrips with highest PCR on OI were Oracle Financial Services Software (2.00), Bajaj Finserv (1.93), Bharat Petroleum Corporation (1.50), Larsen & Toubro (1.48), and Birlasoft (1.32).

From the most active contracts, Yes Bank March 2019 futures traded at a premium of 0.85 points at 251.00 compared with spot closing of 250.15. The numbers of contracts traded were 43,254.

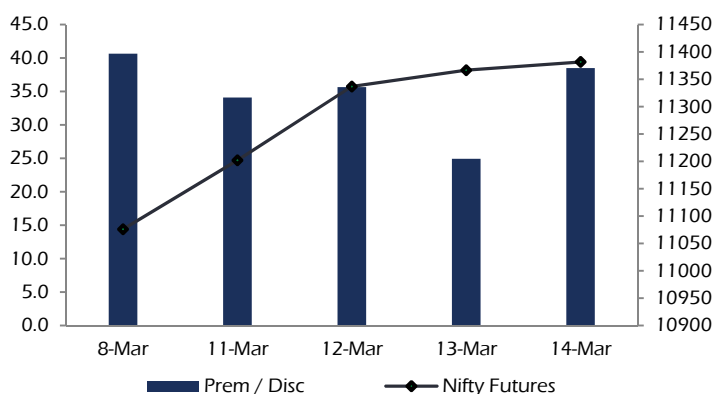
Reliance Industries March 2019 futures traded at a premium of 6.05 points at 1345.55 compared with spot closing of 1339.50. The numbers of contracts traded were 29,807.

IndusInd Bank March 2019 futures traded at a premium of 1.00 points at 1682.85 compared with spot closing of 1681.85. The numbers of contracts traded were 24,264.

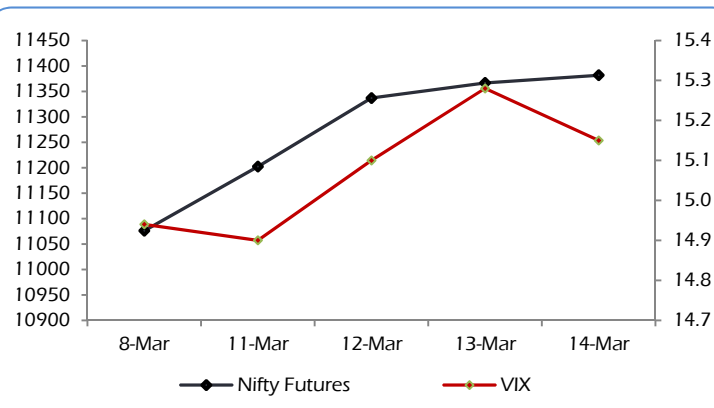
HDFC Bank March 2019 futures traded at a premium of 6.85 points at 2229.90 compared with spot closing of 2223.05. The numbers of contracts traded were 21,090.

Indiabulls Housing Finance March 2019 futures traded at a premium of 3.90 points at 705.80 compared with spot closing of 701.90. The numbers of contracts traded were 15,090.

## NIFTY PREMIUM / DISCOUNT



## CNX NIFTY vs INDIA VIX



### Nifty Call Options

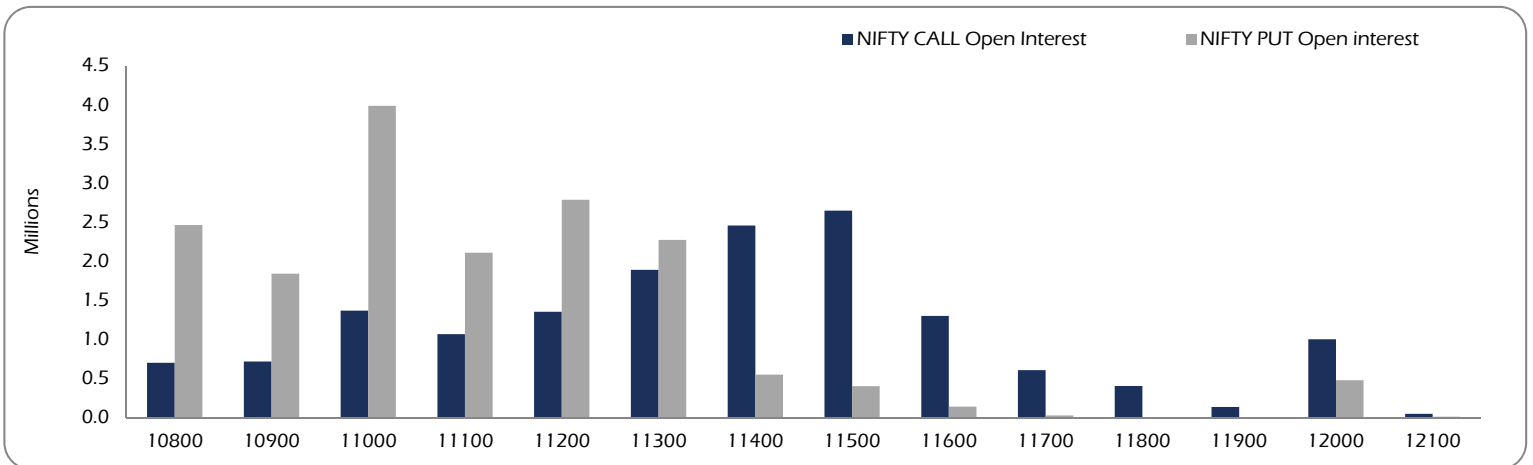
Strike	Nifty Call OI	Chg in OI	Curr. IV	Prev. IV	LTP	Net Chg
11100	10,67,475	11925	-	-	306.9	3.8
11200	13,53,750	-89625	-	-	227.9	4.1
11300	18,90,675	-67725	-	9.6	156.9	1.8
11400	24,56,700	177450	-	12.1	98.9	0.8
11500	26,46,750	143400	-	14.1	56.3	-1.6
11600	13,01,025	249975	-	18.1	29.5	-2.5
11700	6,06,225	48900	-	22.7	14.7	-1.9
11800	4,05,450	136875	-	28.8	7.3	-2.0
11900	1,35,900	15675	-	35.0	4.7	-1.6
12000	10,01,925	40050	-	34.3	3.3	-0.7

### Nifty Put Options

Strike	Nifty Put OI	Chg in OI	Curr. IV	Prev. IV	LTP	Net Chg
11100	21,08,325	211950	-	23.0	32.4	-11.0
11000	27,86,775	389100	-	30.3	48.9	-14.0
11100	22,71,450	853950	-	23.0	76.4	-15.9
11200	5,49,675	183675	-	17.7	116.2	-16.8
11300	4,03,350	4800	-	13.0	174	-18.1
11400	1,41,075	54000	-	10.7	247	-15.5
11500	27,300	13350	-	-	328	-21.2
11600	8,400	2325	-	17.2	421	-26.8
11700	8,100	-75	-	-	518	-27.0
11800	4,77,975	6225	-	-	611	-19.0

Nifty Options Data is for the expiry 28-Mar-19

### OPEN INTEREST – NIFTY CALL & NIFTY PUT

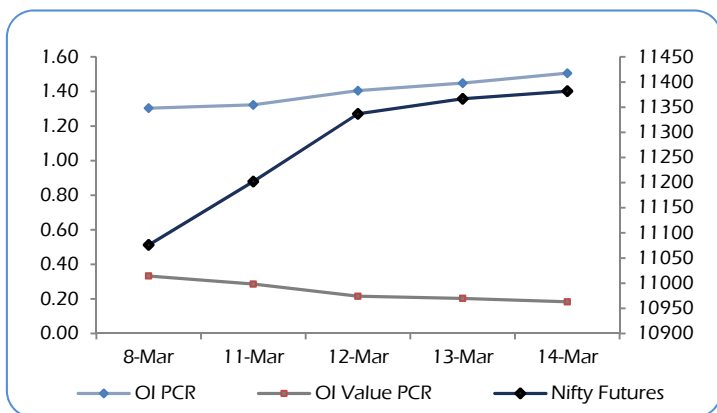


Nifty calls, 11,600 SP from the March month expiry was the most active call with a addition of 0.25 million open interests.

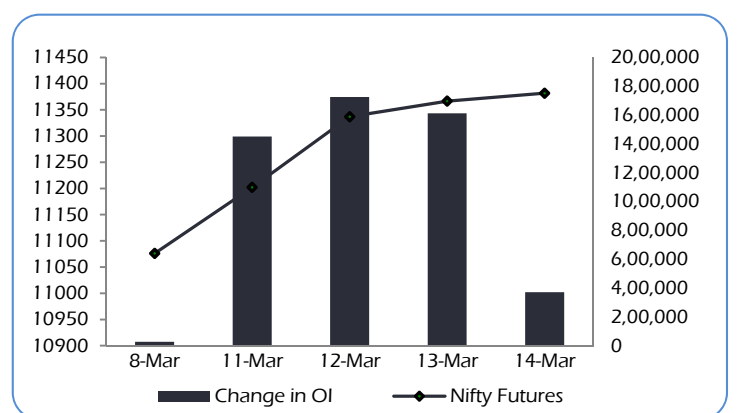
Nifty puts, 11,300SP from the March month expiry was the most active put with an addition of 0.85 million open interests.

The maximum OI outstanding for Calls was at 11,500 SP (2.65 mn) and that for Puts was at 11,000 SP (3.99mn).

### OI PCR, OI Value PCR vs NIFTY FUTURES



### Change in OPEN INTEREST (Total) vs NIFTY FUTURES



## NIFTY OPTIONS

### Nifty Bullish Call Spread

Action	Strike	Premium	Max Profit	Max Loss
Buy	11400	98.9	57.45	42.55
Sell	11500	56.3		
Buy	11500	56.3	73.15	26.85
Sell	11600	29.5		
Buy	11400	98.9	130.60	69.40
Sell	11600	29.5		

### Nifty Bearish Put Spread

Action	Strike	Premium	Max Profit	Max Loss
Buy	11500	174	42.70	57.30
Sell	11400	116		
Buy	11400	116	60.20	39.80
Sell	11300	76		
Buy	11500	174	102.90	97.10
Sell	11300	76		

Note: Above spread are provided for information purposes.

## STOCK OPTIONS

### Most Active Calls

Scrip	Strike Price	Price	Spot	Turnover (Rs Crs.)	Expiry
YESBANK	250	11.75	250	540	28-Mar-19
INDUSINDBK	1700	31.95	1683	593	28-Mar-19
YESBANK	260	7.75	250	475	28-Mar-19
RELIANCE	1380	13.95	1342	642	28-Mar-19
RELIANCE	1360	20.85	1342	584	28-Mar-19

### Most Active Puts

Scrip	Strike Price	Price	Spot	Turnover (Rs Crs.)	Expiry
RELIANCE	1340	24.80	1342	591	28-Mar-19
RELIANCE	1300	11.50	1342	360	28-Mar-19
RELIANCE	1320	17.00	1342	340	28-Mar-19
YESBANK	240	5.70	250	183	28-Mar-19
RELCAPITAL	170	14.00	172	96	28-Mar-19

## STOCK FUTURES

### LONG BUILDUP (Price rise OI rise)

Stock	CMP	Price Chg	OI Chg	(NSE+BSE) %Delivery	Recovery
NBCC	65	7.7%	5.3%	24%	9%
PCJEWELLER	86	6.8%	15.9%	11%	6%
INFIBEAM	46	5.1%	9.9%	17%	5%
NTPC	154	3.7%	0.4%	44%	4%
SUZLON	7	3.7%	1.1%	13%	4%

### SHORT BUILDUP (Price fall OI rise)

Stock	CMP	Price chg	OI chg	(NSE+BSE) %Delivery	Fall from High
RELCAPITAL	172	-8.4%	15.1%	13%	10%
POWERGRID	188	-3.7%	3.0%	39%	1%
CONCOR	509	-2.6%	10.8%	47%	3%
VOLTAS	603	-2.6%	0.8%	24%	2%
SRTRANSFIN	1247	-2.6%	0.6%	32%	4%

### SHORT UNWINDING (Price rise OI fall)

Stock	CMP	Price Chg	OI Chg	(NSE+BSE) %Delivery	Recovery
DLF	202	5.0%	-0.3%	10%	6%
INDUSINDBK	1683	2.8%	-5.1%	35%	3%
ARVIND	95	2.7%	-12.3%	19%	4%
PEL	2652	1.9%	-6.5%	37%	3%
COALINDIA	243	1.9%	-2.0%	63%	2%

### LONG UNWINDING (Price fall OI fall)

Stock	CMP	Price chg	OI chg	(NSE+BSE) %Delivery	Fall from High
JPASSOCIAT	6	-4.6%	-1.1%	29%	8%
RELINFRA	125	-3.7%	-4.1%	19%	5%
HAVELLS	747	-2.5%	-2.7%	43%	3%
VGUARD	215	-2.3%	-4.0%	29%	3%
PETRONET	238	-2.0%	-3.6%	69%	2%

Long positions were witnessed in stocks like NBCC & PCJEWELLER

Short positions were witnessed in stocks like RELCAPITAL & POWERGRID

**FII's ACTIVITY IN DERIVATIVES**

14-Mar-19	Buy	Sell	Net	OI	%	OI	%
Rs. Crs				Value	Chg	Contracts	Chg
INDEX FUTURES	2,847	2,362	485	22,966	1.0%	2,87,854	0.2%
INDEX OPTIONS	2,77,403	2,77,129	274	70,750	-4.6%	9,14,679	-6.0%
<b>TOTAL INDEX</b>	<b>2,80,250</b>	<b>2,79,491</b>	<b>759</b>				
STOCK FUTURES	11,073	10,731	342	89,266	0.2%	14,18,277	0.4%
STOCK OPTIONS	7,202	7,281	-79	8,113	5.9%	1,29,897	4.4%
<b>TOTAL STOCKS</b>	<b>18,275</b>	<b>18,012</b>	<b>263</b>				

**NSE DERIVATIVES TURNOVER**

Rs. Crs	14-Mar	13-Mar	%	FII's
			Chg	Contribution
INDEX FUTURES	17,636	23,886	-26%	30%
INDEX OPTIONS	18,85,756	11,80,437	60%	29%
<b>TOTAL INDEX</b>	<b>19,03,392</b>	<b>12,04,323</b>	<b>58%</b>	
STOCK FUTURES	46,306	54,364	-15%	47%
STOCK OPTIONS	47,511	55,950	-15%	30%
<b>TOTAL STOCKS</b>	<b>93,817</b>	<b>1,10,314</b>	<b>-15%</b>	

**FII's contribution to the total Derivatives turnover**
**30%**
**39%**
**DISCLAIMERS AND DISCLOSURES**

LKP Sec. Ltd. (CIN-L67120MH1994PLC080039, www.lkpsc.com) and its affiliates are a full-fledged, brokerage and financing group. LKP was established in 1992 and is one of India's leading brokerage and distribution house. LKP is a corporate trading member of Bombay Stock Exchange Limited (BSE), National Stock Exchange of India Limited (NSE), MCX Stock Exchange Limited (MCX-SX). LKP along with its subsidiaries offers the most comprehensive avenues for investments and is engaged in the businesses including stock broking (Institutional and retail), merchant banking, commodity broking, depository participant, insurance broking and services rendered in connection with distribution of primary market issues and financial products like mutual funds etc.

LKP hereby declares that it has not defaulted with any stock exchange nor its activities were suspended by any stock exchange with whom it is registered in last five years. However, SEBI and Stock Exchanges have conducted the routine inspection and based on their observations have issued advice letters or levied minor penalty on LKP for certain operational deviations in ordinary/routine course of business. LKP has not been debarred from doing business by any Stock Exchange / SEBI or any other authorities; nor has its certificate of registration been cancelled by SEBI at any point of time.

LKP offers research services to clients. The analyst for this report certifies that all of the views expressed in this report accurately reflect his or her personal views about the subject company or companies and its or their securities, and no part of his or her compensation was, is or will be, directly or indirectly related to specific recommendations or views expressed in this report.

Other disclosures by LKP and its Research Analyst under SEBI (Research Analyst) Regulations, 2014 with reference to the subject company(s) covered in this report:-

Research Analyst or his/her relative's financial interest in the subject company. (NO)

LKP or its associates may have financial interest in the subject company.

LKP or its associates and Research Analyst or his/her relative's does not have any material conflict of interest in the subject company. The research Analyst or research entity (LKP) has not been engaged in market making activity for the subject company.

LKP or its associates may have actual/beneficial ownership of 1% or more securities of the subject company at the end of the month immediately preceding the date of publication of Research Report.

Research Analyst or his/her relatives have actual/beneficial ownership of 1% or more securities of the subject company at the end of the month immediately preceding the date of publication of Research Report: (NO)

LKP or its associates may have received any compensation including for investment banking or merchant banking or brokerage services from the subject company in the past 12 months.

LKP or its associates may have received compensation for products or services other than investment banking or merchant banking or brokerage services from the subject company in the past 12 months.

LKP or its associates may have received any compensation or other benefits from the Subject Company or third party in connection with the research report.

Subject Company may have been client of LKP or its associates during twelve months preceding the date of distribution of the research report and LKP may have co-managed public offering of securities for the subject company in the past twelve months.

Research Analyst has served as officer, director or employee of the subject company: (NO)

LKP and/or its affiliates may seek investment banking or other business from the company or companies that are the subject of this material. Our salespeople, traders, and other professionals may provide oral or written market commentary or trading strategies to our clients that reflect opinions that are contrary to the opinions expressed herein, and our proprietary trading and investing businesses may make investment decisions that may be inconsistent with the recommendations expressed herein.

In reviewing these materials, you should be aware that any or all of the foregoing, among other things, may give rise to real or potential conflicts of interest including but not limited to those stated herein. Additionally, other important information regarding our relationships with the company or companies that are the subject of this material is provided herein. This report is not directed to, or intended for distribution to or use by, any person or entity who is a citizen or resident of or located in any locality, state, country or other jurisdiction where such distribution, publication, availability or use would be contrary to law or regulation or which would subject LKP or its group companies to any registration or licensing requirement within such jurisdiction. Specifically, this document does not constitute an offer to or solicitation to any U.S. person for the purchase or sale of any financial instrument or as an official confirmation of any transaction to any U.S. person.

Unless otherwise stated, this message should not be construed as official confirmation of any transaction. No part of this document may be distributed in Canada or used by private customers in United Kingdom.

All trademarks, service marks and logos used in this report are trademarks or registered trademarks of LKP or its Group Companies. The information contained herein is not intended for publication or distribution or circulation in any manner whatsoever and any unauthorized reading, dissemination, distribution or copying of this communication is prohibited unless otherwise expressly authorized. Please ensure that you have read "Risk Disclosure Document for Capital Market and Derivatives Segments" as prescribed by Securities and Exchange Board of India before investing in Indian Securities Market. In so far as this report includes current or historic information, it is believed to be reliable, although its accuracy and completeness cannot be guaranteed.

All material presented in this report, unless specifically indicated otherwise, is under copyright to LKP. None of the material, nor its content, nor any copy of it, may be altered in any way, transmitted to, copied or distributed to any other party, without the prior express written permission of LKP