



BHARAT FORGE

(CMP ₹ 679.05)

Buy in Range : ₹ 679 - 690

SL : Below ₹ 650 CB

1 Month Target: ₹ 720 / 750



- On daily chart stock has formed inverse head and shoulder pattern which is bullish reversal in nature
- We have witnessed strong volume activity at the time breakout hinting near term bottom is formed and stock is all set move higher
- On daily chart positive divergence is observed which early sign of reversal.
- On weekly chart stock is in formation of rounding bottom which is again bullish reversal by nature.

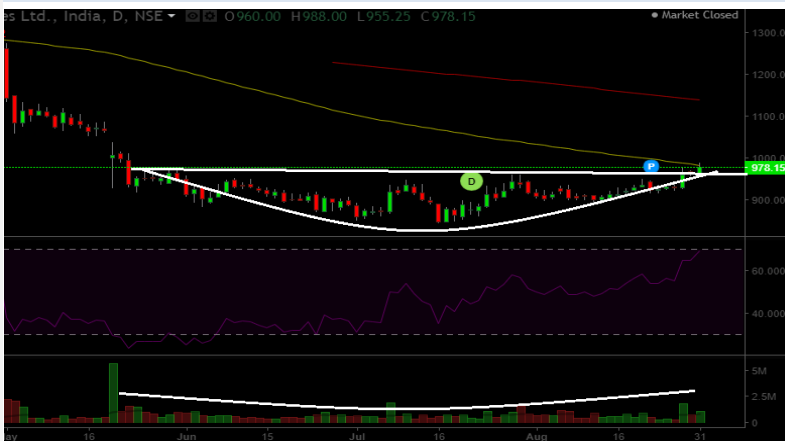
CENTURY TEXTILES

(CMP ₹ 978.15)

Buy in Range: ₹ 978 - 990

SL : Below ₹ 950 CB

1 Month Target: ₹ 1030 / 1060



- On daily chart stock has given a rounding bottom pattern breakout which is bullish reversal pattern by nature.
- Volume activity also seemed to be good at the time of breakout making pattern attractive.
- On weekly chart stock is bouncing after taking support from 200 DMA and in formation of small rounding bottom pattern
- Again positive divergence is seen on daily chart and on monthly chart stock formed morning star kind of candle pattern which is also bullish reversal

PTC INDIA FINANCIAL

(CMP ₹ 19.50)

Buy in Range: ₹ 19.50-20.00

SL : Below ₹ 18.40 CB

1 Month Target: ₹ 21 / 22



- On weekly chart stock has given breakout from its falling channel pattern even we observed small Cup and Handle pattern on weekly chart both are bullish reversal patterns
- On daily chart strong positive divergence is witnessed as seen on charts
- On daily stock has given breakout from Cup and handle pattern with good volume

*CB - Closing basis



Trilogy performance

LKP Trilogy for the month August 2018 performance

(₹)

Name	Reco	Date	CMP	Buy in Range	SL	Target	Bought @	Sold @	Capital Invested	P/L (%)	P/L	Comments
Ajanta Pharma	Buy	29-Jul	1,100	1,095 - 1,105	1,050	1,150 / 1,195	1,100.00	1,172.50	1,00,000	6.6%	6,591	Trgt hit
Kaveri Seed	Buy	29-Jul	608	608 - 615	575	645 - 685	611.85	643.85	1,00,000	5.2%	5,230	1 st Trgt hit
IDBI Bank	Buy	29-Jul	60	60.10 - 61	56	65 / 70	60.10	64.00	1,00,000	6.5%	6,489	1st Trgt hit
TOTAL									3,00,000	6.1%	18,310	
NIFTY		29-Jul	11,278					11,681	3,00,000	3.6%	10,697	
OUTPERFORMANCE										2.5%	7,613	

LKP Trilogy for the month July 2018 performance

(₹)

Name	Reco	Date	Price	SL	Target	Price as on 27-Jul	Capital Invested	P/L (%)	P/L	Comments
Bajaj Auto	Buy	1-Jul-18	2,815	2,620	3,000	3,000	1,00,000	6.6%	6,572	Target hit
CG Power	Buy	1-Jul-18	56	50	65	65	1,00,000	16.1%	16,071	Target hit
Larsen & Toubro	Buy	1-Jul-18	1,278	1,225	1,320	1,320	1,00,000	3.3%	3,294	Target hit
TOTAL							3,00,000	8.6%	25,938	
NIFTY		1-Jul-18	10,714			11,278	3,00,000	5.3%	15,793	
OUTPERFORMANCE								3.4%	10,144	

LKP Trilogy for the month June 2018 performance

(₹)

Name	Reco	Date	Price	SL	Target	Price as on 29-Jun	Capital Invested	P/L (%)	P/L	Comments
Inox Leisure	Buy	3-Jun-18	265	250	290	259	100,000	-2.5%	(2,453)	Closed
Maruti Suzuki	Buy	3-Jun-18	8,750	8,450	9,150	8,815	100,000	0.7%	746	Closed
Trigyn Technologies	Buy	3-Jun-18	125	115	135	135	100,000	8.0%	8,000	Target hit
TOTAL							300,000	2.1%	6,293	
NIFTY		3-Jun-18	10,696			10,714	300,000	0.2%	499	
OUTPERFORMANCE								1.9%	5,794	

LKP Trilogy for the month May 2018 performance

(₹)

Name	Reco	Date	Price	SL	Target	Price as on 31-May	Capital Invested	P/L (%)	P/L	Comments
Godrej Industries	Buy	2-May-18	625	595	655	597	100,000	-4.8%	(4,800)	SL Hit
Asian Paints	Buy	2-May-18	1,210	1,155	1,300	1,300	100,000	7.4%	7,438	Target hit
Berger Paints	Buy	2-May-18	280	270	298	270	100,000	-3.6%	(3,571)	SL Hit
TOTAL							300,000	-0.3%	(933)	
NIFTY		2-May-18	10,718			10,736	300,000	0.2%	508	
OUTPERFORMANCE								-0.5%	(1,441)	



TRILOGY



DISCLAIMERS AND DISCLOSURES

LKP Sec. Ltd. (CIN-L67120MH1994PLC080039, www. Lkpsec.com) and its affiliates are a full-fledged, brokerage and financing group. LKP was established in 1992 and is one of India's leading brokerage and distribution house. LKP is a corporate trading member of Bombay Stock Exchange Limited (BSE), National Stock Exchange of India Limited(NSE), MCX Stock Exchange Limited (MCX-SX).LKP along with its subsidiaries offers the most comprehensive avenues for investments and is engaged in the businesses including stock broking (Institutional and retail), merchant banking, commodity broking, depository participant, insurance broking and services rendered in connection with distribution of primary market issues and financial products like mutual funds etc.

LKP hereby declares that it has not defaulted with any stock exchange nor its activities were suspended by any stock exchange with whom it is registered in last five years. However, SEBI and Stock Exchanges have conducted the routine inspection and based on their observations have issued advice letters or levied minor penalty on LKP for certain operational deviations in ordinary/routine course of business. LKP has not been debarred from doing business by any Stock Exchange / SEBI or any other authorities; nor has its certificate of registration been cancelled by SEBI at any point of time.

LKP offers research services to clients. The analyst for this report certifies that all of the views expressed in this report accurately reflect his or her personal views about the subject company or companies and its or their securities, and no part of his or her compensation was, is or will be, directly or indirectly related to specific recommendations or views expressed in this report.

Other disclosures by LKP and its Research Analyst under SEBI (Research Analyst) Regulations, 2014 with reference to the subject company(s) covered in this report:-

Research Analyst or his/her relative's financial interest in the subject company. (NO)

LKP or its associates may have financial interest in the subject company.

LKP or its associates and Research Analyst or his/her relative's does not have any material conflict of interest in the subject company. The research Analyst or research entity (LKP) has not been engaged in market making activity for the subject company.

LKP or its associates may have actual/beneficial ownership of 1% or more securities of the subject company at the end of the month immediately preceding the date of publication of Research Report.

Research Analyst or his/her relatives have actual/beneficial ownership of 1% or more securities of the subject company at the end of the month immediately preceding the date of publication of Research Report: (NO)

LKP or its associates may have received any compensation including for investment banking or merchant banking or brokerage services from the subject company in the past 12 months.

LKP or its associates may have received compensation for products or services other than investment banking or merchant banking or brokerage services from the subject company in the past 12 months.

LKP or its associates may have received any compensation or other benefits from the Subject Company or third party in connection with the research report.

Subject Company may have been client of LKP or its associates during twelve months preceding the date of distribution of the research report and LKP may have co-managed public offering of securities for the subject company in the past twelve months.

Research Analyst has served as officer, director or employee of the subject company: (NO)

LKP and/or its affiliates may seek investment banking or other business from the company or companies that are the subject of this material. Our salespeople, traders, and other professionals may provide oral or written market commentary or trading strategies to our clients that reflect opinions that are contrary to the opinions expressed herein, and our proprietary trading and investing businesses may make investment decisions that may be inconsistent with the recommendations expressed herein.

In reviewing these materials, you should be aware that any or all of the foregoing, among other things, may give rise to real or potential conflicts of interest including but not limited to those stated herein. Additionally, other important information regarding our relationships with the company or companies that are the subject of this material is provided herein. This report is not directed to, or intended for distribution to or use by, any person or entity who is a citizen or resident of or located in any locality, state, country or other jurisdiction where such distribution, publication, availability or use would be contrary to law or regulation or which would subject LKP or its group companies to any registration or licensing requirement within such jurisdiction. Specifically, this document does not constitute an offer to or solicitation to any U.S. person for the purchase or sale of any financial instrument or as an official confirmation of any transaction to any U.S. person.

Unless otherwise stated, this message should not be construed as official confirmation of any transaction. No part of this document may be distributed in Canada or used by private customers in United Kingdom.

All trademarks, service marks and logos used in this report are trademarks or registered trademarks of LKP or its Group Companies. The information contained herein is not intended for publication or distribution or circulation in any manner whatsoever and any unauthorized reading, dissemination, distribution or copying of this communication is prohibited unless otherwise expressly authorized. Please ensure that you have read "Risk Disclosure Document for Capital Market and Derivatives Segments" as prescribed by Securities and Exchange Board of India before investing in Indian Securities Market. In so far as this report includes current or historic information, it is believed to be reliable, although its accuracy and completeness cannot be guaranteed.

All material presented in this report, unless specifically indicated otherwise, is under copyright to LKP. None of the material, nor its content, nor any copy of it, may be altered in any way, transmitted to, copied or distributed to any other party, without the prior express written permission of LKP.