

Inox Leisure

CMP: ₹269

Buy In Range : ₹265 - 275

SL : Below ₹250 CB

1 Month Target: ₹290 / 300



- Stock is hovering near its long term rising trend line and we have witnessed a bullish candle pattern on weekly chart after testing the same trend line.
- On daily chart stock is bouncing after touching its 61.8% retracement support from previous low of 215.
- Stock is trading above its all strong DMA's like 200/100/50 on weekly chart.
- On weekly chart stock showed bounce from previous breakout zone suggesting strength of the stock.

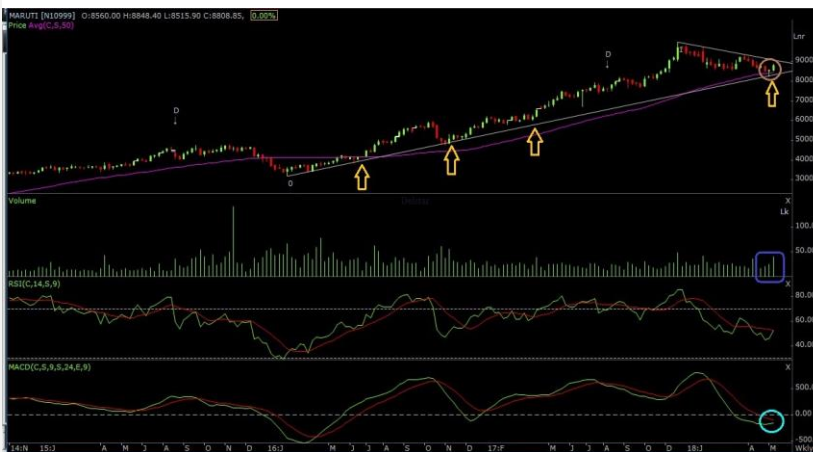
Maruti Suzuki

CMP: ₹8,809

Buy In Range : ₹8,750 – 8,850

SL : Below ₹8,450 CB

1 Month Target: ₹9,150 / 9,400



- Stock has recently given bounce from its strong support zone of 78.6% retracement from previous breakout low.
- On daily chart stock has given a small flag breakout with strong volume suggesting stock is ready to continue its overall uptrend.
- On weekly chart stock has formed a Morning star candle pattern near its 50EMA which is bullish reversal in nature.
- On hourly channel stock is trading in positive divergence so we may expect a good bounce in near term.

Trigyn Technologies

CMP: ₹125

Buy In Range : ₹122 - 128

SL : Below ₹115 CB

1 Month Target: ₹135 / 142



- On weekly chart stock is trading in long term rising channel pattern and current prices are hovering near lower band of the channel.
- On weekly chart stock has formed inverted hammer kind of candle pattern after strong fall so we may expect a good bounce from current levels.
- On hourly chart stock has recently given breakout above its falling trend line with strong volume
- Also we have witnessed a positive divergence on hourly chart.

*CB - Closing basis

Gaurav Bissa (AVP-Technical & Derivatives)
gaurav_bissa@lkpsec.com +91 22 6635 1347

Rohit Singre (Sr.Technical Analyst)
rohit_singre@lkpsec.com +91 22 6635 1347

3 June,2018



Trilogy performance

LKP Trilogy for the month May 2018 performance

(₹)

Name	Reco	Date	Price	SL	Target	Price as on 31-May	Capital Invested	P/L (%)	P/L	Comments
Godrej Industries	Buy	2-May-18	625	595	655	597	100,000	-4.8%	(4,800)	SL Hit
Asian Paints	Buy	2-May-18	1,210	1,155	1,300	1,300	100,000	7.4%	7,438	Target hit
Berger Paints	Buy	2-May-18	280	270	298	270	100,000	-3.6%	(3,571)	SL Hit
TOTAL							300,000	-0.3%	(933)	
NIFTY		2-May-18	10,718			10,736	300,000	0.2%	508	
OUTPERFORMANCE								-0.5%	(1,441)	

LKP Trilogy for the month April 2018 performance

(₹)

Name	Reco	Date	Price	SL	Target	Price as on 30-Apr	Capital Invested	P/L (%)	P/L	Comments
Navin Fluorine	Buy	1-Apr-18	772	730	810	810	100,000	4.9%	4,922	Target hit
Bharat Forge	Buy	1-Apr-18	699.65	665	770	770	100,000	10.1%	10,055	Target hit
Muthoot Finance	Buy	1-Apr-18	405	380	430	430	100,000	6.2%	6,173	Target hit
TOTAL							300,000	7.1%	21,150	
NIFTY		1-Apr-18	10,114			10,739	300,000	6.2%	18,558	
OUTPERFORMANCE								0.9%	2,592	

LKP Trilogy for the month March 2018 performance

(₹)

Name	Reco	Date	Price	SL	Target	Price as on 28-Mar	Capital Invested	P/L (%)	P/L	Comments
Firstsource Solutions	Buy	4-Mar-18	53.25	49	57	49	100,000	-8.0%	(7,981)	SL Hit
InterGlobe Aviation	Buy	4-Mar-18	1,332	1,280	1,380	1,280	100,000	-3.9%	(3,904)	SL Hit
Shankara Building Prod.	Buy	4-Mar-18	1,850	1,780	1,920	1,780	100,000	-3.8%	(3,784)	SL Hit
TOTAL							300,000	-5.2%	(15,669)	
NIFTY		4-Mar-18	10,458			10,114	300,000	-3.3%	(9,886)	
OUTPERFORMANCE								-1.9%	(5,783)	

LKP Trilogy for the month February 2018 performance

(₹)

Name	Reco	Date	Price	SL	Target	Price as on 28-Feb	Capital Invested	P/L (%)	P/L	Comments
Dish TV	Buy	5-Feb-18	72	68	76	76	100,000	5.6%	5,556	Target hit
Mcleod Russel	Buy	5-Feb-18	162	154	170	170	100,000	4.9%	4,938	Target hit
Hero Motocorp	Buy	5-Feb-18	3,560	3,490	3,650	3,650	100,000	2.5%	2,528	Target hit
TOTAL							300,000	4.3%	13,022	
NIFTY		5-Feb-18	10,667			10,493	300,000	-1.6%	(4,887)	
OUTPERFORMANCE								6.0%	17,909	



DISCLAIMERS AND DISCLOSURES

LKP Sec. Ltd. (CIN-U67120MH1994PLC080039, www.lkpsec.com) and its affiliates are a full-fledged, brokerage and financing group. LKP was established in 1992 and is one of India's leading brokerage and distribution house. LKP is a corporate trading member of Bombay Stock Exchange Limited (BSE), National Stock Exchange of India Limited (NSE), MCX Stock Exchange Limited (MCX-SX). LKP along with its subsidiaries offers the most comprehensive avenues for investments and is engaged in the businesses including stock broking (Institutional and retail), merchant banking, commodity broking, depository participant, insurance broking and services rendered in connection with distribution of primary market issues and financial products like mutual funds etc.

LKP hereby declares that it has not defaulted with any stock exchange nor its activities were suspended by any stock exchange with whom it is registered in last five years. However, SEBI and Stock Exchanges have conducted the routine inspection and based on their observations have issued advice letters or levied minor penalty on LKP for certain operational deviations in ordinary/routine course of business. LKP has not been debarred from doing business by any Stock Exchange / SEBI or any other authorities; nor has its certificate of registration been cancelled by SEBI at any point of time.

LKP offers research services to clients. The analyst for this report certifies that all of the views expressed in this report accurately reflect his or her personal views about the subject company or companies and its or their securities, and no part of his or her compensation was, is or will be, directly or indirectly related to specific recommendations or views expressed in this report.

Other disclosures by LKP and its Research Analyst under SEBI (Research Analyst) Regulations, 2014 with reference to the subject company(s) covered in this report:

Research Analyst or his/her relative's financial interest in the subject company. (NO)

LKP or its associates may have financial interest in the subject company.

LKP or its associates and Research Analyst or his/her relative's does not have any material conflict of interest in the subject company. The research Analyst or research entity (LKP) has not been engaged in market making activity for the subject company.

LKP or its associates may have actual/beneficial ownership of 1% or more securities of the subject company at the end of the month immediately preceding the date of publication of Research Report.

Research Analyst or his/her relatives have actual/beneficial ownership of 1% or more securities of the subject company at the end of the month immediately preceding the date of publication of Research Report: (NO)

LKP or its associates may have received any compensation including for investment banking or merchant banking or brokerage services from the subject company in the past 12 months.

LKP or its associates may have received compensation for products or services other than investment banking or merchant banking or brokerage services from the subject company in the past 12 months.

LKP or its associates may have received any compensation or other benefits from the Subject Company or third party in connection with the research report.

Subject Company may have been client of LKP or its associates during twelve months preceding the date of distribution of the research report and LKP may have co-managed public offering of securities for the subject company in the past twelve months.

Research Analyst has served as officer, director or employee of the subject company: (NO)

LKP and/or its affiliates may seek investment banking or other business from the company or companies that are the subject of this material. Our salespeople, traders, and other professionals may provide oral or written market commentary or trading strategies to our clients that reflect opinions that are contrary to the opinions expressed herein, and our proprietary trading and investing businesses may make investment decisions that may be inconsistent with the recommendations expressed herein.

In reviewing these materials, you should be aware that any or all of the foregoing, among other things, may give rise to real or potential conflicts of interest including but not limited to those stated herein. Additionally, other important information regarding our relationships with the company or companies that are the subject of this material is provided herein. This report is not directed to, or intended for distribution to or use by, any person or entity who is a citizen or resident of or located in any locality, state, country or other jurisdiction where such distribution, publication, availability or use would be contrary to law or regulation or which would subject LKP or its group companies to any registration or licensing requirement within such jurisdiction. Specifically, this document does not constitute an offer to or solicitation to any U.S. person for the purchase or sale of any financial instrument or as an official confirmation of any transaction to any U.S. person.

Unless otherwise stated, this message should not be construed as official confirmation of any transaction. No part of this document may be distributed in Canada or used by private customers in United Kingdom.

All trademarks, service marks and logos used in this report are trademarks or registered trademarks of LKP or its Group Companies. The information contained herein is not intended for publication or distribution or circulation in any manner whatsoever and any unauthorized reading, dissemination, distribution or copying of this communication is prohibited unless otherwise expressly authorized. Please ensure that you have read "Risk Disclosure Document for Capital Market and Derivatives Segments" as prescribed by Securities and Exchange Board of India before investing in Indian Securities Market. In so far as this report includes current or historic information, it is believed to be reliable, although its accuracy and completeness cannot be guaranteed.

All material presented in this report, unless specifically indicated otherwise, is under copyright to LKP. None of the material, nor its content, nor any copy of it, may be altered in any way, transmitted to, copied or distributed to any other party, without the prior express written permission of LKP.