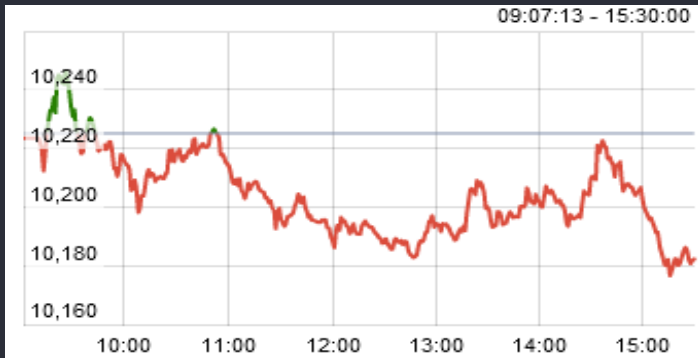


Date	Nifty Spot	Nifty Future	Pre / Dis	Nifty Future Curr. expiry OI	Nifty Future Total OI	PCR (OI)	VIX	Most Active Call	Most Active Put	P/E	Nifty P/B
14-Nov	10187	10,234	47.00	24,821,775	26,898,900	0.85	14.17	10300	10300	25.89	3.44
13-Nov	10225	10,269	44.45	26,027,625	27,977,400	0.90	14.05	10400	10200	25.99	3.45
<b>Chg</b>	<b>-0.38%</b>	<b>-0.35%</b>		<b>-4.63%</b>	<b>-3.85%</b>		<b>0.85%</b>				

Nifty Options Data is for the expiry 30-Nov-17

## CNX NIFTY



## MARKET OVERVIEW

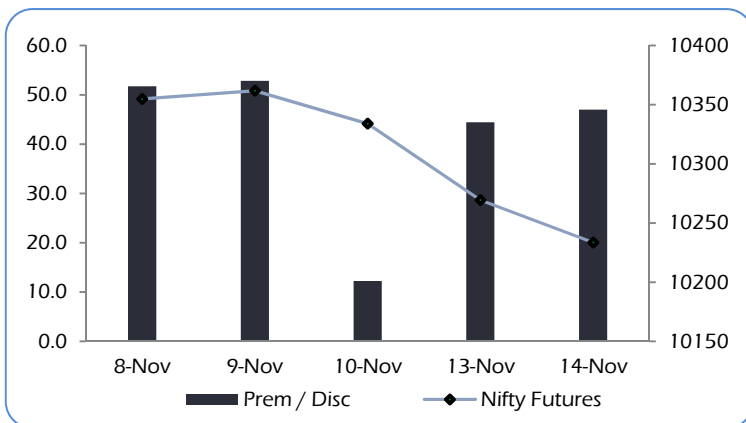
The India Volatility Index (VIX), a gauge for market's short term expectation of volatility increased by 0.85% and reached 14.17.

Nifty November 2017 futures closed at 10233.60 on Tuesday, at a premium of 47 points over spot closing of 10186.60.

Nifty December 2017 futures ended at 10274.05, at a premium of 87.45 points over spot closing.

Nifty November futures saw a contraction of 1.20 million (mn) units, taking the total outstanding open interest (OI) to 24.82 mn units.

## NIFTY PREMIUM / DISCOUNT



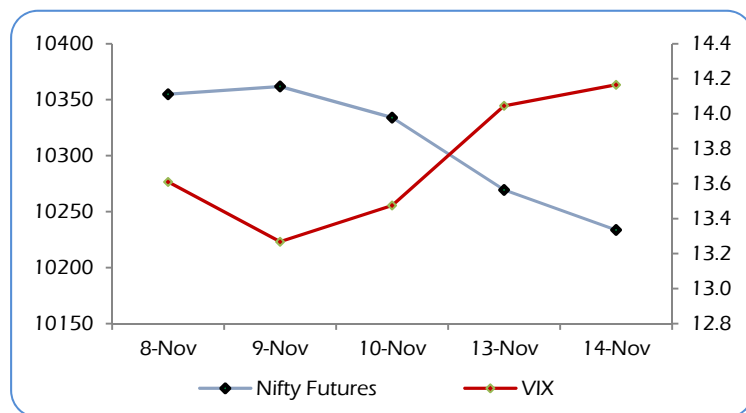
The Nifty Put Call Ratio (PCR) finally stood at 0.85 for November month contract.

The top five scrips with highest PCR on OI were Godrej Consumer Products (3.68), Cholamandalam Investment and Finance Company (1.75), JSW Energy (1.74), Dewan Housing Finance Corporation (1.33) and Dalmia Bharat (1.30).

From the most active contracts, Tata Global Beverages November 2017 futures traded at a premium of 1.25 point at 247.65 compared with spot closing of 246.40. The numbers of contracts traded were 18,175.

Axis Bank November 2017 futures traded at a premium of 0.90 points at 548.50 compared with spot closing of 547.60. The numbers of contracts traded were 17,842.

## CNX NIFTY vs INDIA VIX



State Bank of India November 2017 futures traded at a premium of 1.80 points at 330.85 compared with spot closing of 329.05. The numbers of contracts traded were 15,355.

Bank of Baroda November 2017 futures traded at a premium of 0.65 points at 175.30 compared with spot closing of 174.65. The numbers of contracts traded were 15,326.

Tata Motors November 2017 futures traded at a premium of 2.25 points at 416.25 compared with spot closing of 414.00. The numbers of contracts traded were 15,245.

**Nifty Call Options**

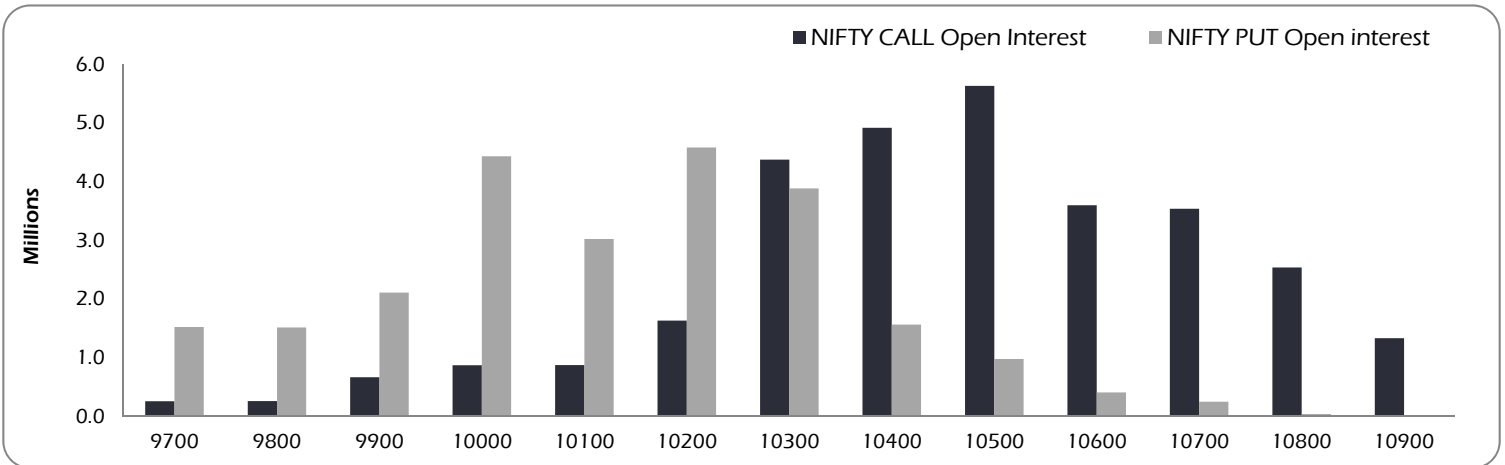
Strike	Nifty Call OI	Chg in OI	Curr. IV	Prev. IV	LTP	Net Chg
9700	257,400	-10575	16	-	535	-39.1
9800	261,375	-9675	15	12	443	-37.2
9900	667,575	-13425	15	14	352	-34.4
10000	872,175	-33225	14	13	264	-36.5
10100	875,550	13200	13	13	186	-33.2
10200	1,633,500	289575	12	12	122	-27.3
10300	4,375,650	372750	11.8	11.6	72.1	-21.3
10400	4,916,700	77850	11.6	11.4	38.4	-14.8
10500	5,631,975	108450	11.6	11.5	19.0	-9.1
10600	3,598,200	-220800	11.7	11.5	8.8	-4.8

**Nifty Put Options**

Strike	Nifty Put OI	Chg in OI	Curr. IV	Prev. IV	LTP	Net Chg
9700	1,522,425	-20025	16	17	7.8	-1.7
9800	1,515,900	157500	15	16	12.3	-1.8
9900	2,110,350	-53475	15	15	19.6	-2.2
10000	4,431,750	-237300	14	15	32.3	-1.4
10100	3,022,725	-469575	13	14	53	1.7
10200	4,581,375	-333525	12	13	85	5.9
10300	3,883,950	-667800	11.8	12.1	132	11.9
10400	1,564,950	-321525	11.6	11.7	197	20.4
10500	978,075	-92175	11.6	11.4	276	26.8
10600	408,225	-105525	11.7	10.9	361	28.3

Nifty Options Data is for the expiry 30-Nov-17

**OPEN INTEREST – NIFTY CALL & NIFTY PUT**

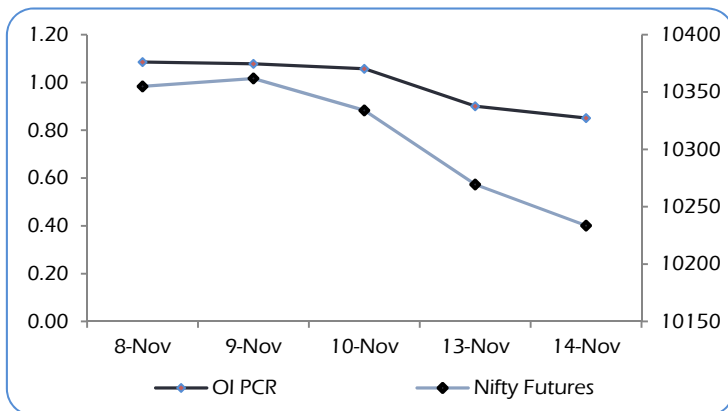


Nifty calls, 10800 SP from the November month expiry was the most active call with a contraction of 0.39 million open interests.

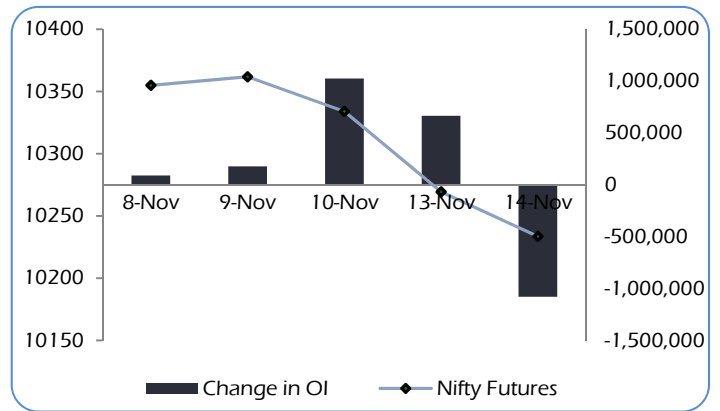
Nifty puts, 10300 SP from the November month expiry was the most active put with a contraction of 0.67 million open interests.

The maximum OI outstanding for Calls was at 10500 SP (5.63 mn) and that for Puts was at 10200 SP (4.58 mn).

**OI PCR, OI Value PCR vs NIFTY FUTURES**



**Change in OPEN INTEREST (Total) vs NIFTY FUTURES**



**NIFTY OPTIONS**
**Nifty Bullish Call Spread**

Action	Strike	Premium	Max Profit	Max Loss
Buy	10300	70.05	67.40	32.60
Sell	10400	37.45		
Buy	10400	37.45	80.70	19.30
Sell	10500	18.15		
Buy	10300	70.05	148.10	51.90
Sell	10500	18.15		

**Nifty Bearish Put Spread**

Action	Strike	Premium	Max Profit	Max Loss
Buy	10400	195.30	37.60	62.40
Sell	10300	132.90		
Buy	10300	132.90	53.45	46.55
Sell	10200	86.35		
Buy	10400	195.30	91.05	108.95
Sell	10200	86.35		

Note: Above spread are provided for information purposes.

**STOCK OPTIONS**
**Most Active Calls**

Scrip	Strike Price	Price	Spot	Turnover (Rs Crs.)	Expiry
TATAGLOBAL	250	6.90	247	483	30-Nov-17
RELIANCE	900	16.90	887	363	30-Nov-17
TATAMOTORS	420	10.90	414	227	30-Nov-17
SUNPHARMA	560	11.20	526	119	30-Nov-17
BANKBARODA	180	6.75	174	165	30-Nov-17

**Most Active Puts**

Scrip	Strike Price	Price	Spot	Turnover (Rs Crs.)	Expiry
SUNPHARMA	500	13.15	526	87	30-Nov-17
AXISBANK	540	10.95	546	137	30-Nov-17
SBIN	330	9.10	329	189	30-Nov-17
SBIN	320	5.60	329	176	30-Nov-17
TATAMOTORS	410	9.55	414	112	30-Nov-17

**STOCK FUTURES**
**LONG BUILDUP (Price rise OI rise)**

Stock	CMP	Price Chg	OI Chg	(NSE+BSE) %Delivery	Recovery
REPCOHOME	631	6.5%	26.6%	23%	4%
TATAGLOBAL	247	5.2%	13.2%	14%	8%
UJJIVAN	389	4.8%	9.0%	22%	5%
VOLTAS	600	4.1%	26.0%	30%	5%
VGUARD	229	3.2%	4.7%	19%	4%

**SHORT BUILDUP (Price fall OI rise)**

Stock	CMP	Price chg	OI chg	(NSE+BSE) %Delivery	Fall from High
RCOM	12	-4.5%	9.4%	17%	7%
INFRATEL	397	-4.5%	35.7%	65%	2%
MARICO	298	-3.7%	12.3%	72%	4%
MUTHOOTFIN	451	-3.4%	10.3%	31%	5%
FEDERALBNK	111	-3.0%	4.4%	43%	2%

**SHORT UNWINDING (Price rise OI fall)**

Stock	CMP	Price Chg	OI Chg	(NSE+BSE) %Delivery	Recovery
JISLJALEOS	103	3.8%	-3.1%	36%	4%
ESCORTS	707	3.2%	-4.6%	25%	4%
TORNTPHARM	1251	2.7%	-4.6%	57%	3%
AJANTPHARM	1238	2.4%	-0.2%	21%	2%
HDIL	59	2.1%	-3.5%	14%	2%

**LONG UNWINDING (Price fall OI fall)**

Stock	CMP	Price chg	OI chg	(NSE+BSE) %Delivery	Fall from High
SRTRANSFIN	1250	-2.4%	-1.3%	61%	3%
KAJARIACER	692	-2.3%	-3.1%	32%	2%
HINDPETRO	411	-2.1%	-0.2%	56%	3%
MINDTREE	498	-2.0%	-1.9%	31%	3%
JETAIRWAYS	694	-2.0%	-2.1%	11%	4%

Long positions were witnessed in stocks like REPCOHOME & TATAGLOBAL

Short positions were witnessed in stocks like RCOM & INFRATEL

### FII's ACTIVITY IN DERIVATIVES

14-Nov-17	Buy	Sell	Net	OI	%	OI	%
Rs. Crs				Value	Chg	Contracts	Chg
INDEX FUTURES	2,068	2,889	-821	27,166	-4.7%	345,203	-4.3%
INDEX OPTIONS	50,676	51,665	-989	84,657	-3.1%	1,075,468	-2.8%
<b>TOTAL INDEX</b>	<b>52,744</b>	<b>54,554</b>	<b>-1,810</b>				
STOCK FUTURES	6,251	8,117	-1866	69,905	0.0%	1,015,308	0.3%
STOCK OPTIONS	5,956	5,885	71	8,375	0.9%	120,101	1.2%
<b>TOTAL STOCKS</b>	<b>12,207</b>	<b>14,002</b>	<b>-1795</b>				

### NSE DERIVATIVES TURNOVER

Rs. Crs	14-Nov	13-Nov	%	FII's
			Chg	Contribution
INDEX FUTURES	15,099	13,985	8%	33%
INDEX OPTIONS	405,479	298,196	36%	25%
<b>TOTAL INDEX</b>	<b>420,578</b>	<b>312,182</b>	<b>35%</b>	
STOCK FUTURES	45,496	49,584	-8%	32%
STOCK OPTIONS	32,954	38,945	-15%	36%
<b>TOTAL STOCKS</b>	<b>78,449</b>	<b>88,529</b>	<b>-11%</b>	

FII's contribution to the total Derivatives turnover

27%

29%

### DISCLAIMERS AND DISCLOSURES

LKP Sec. Ltd. (CIN-U67120MH1994PLC080039, www.lkpsc.com) and its affiliates are a full-fledged, brokerage and financing group. LKP was established in 1992 and is one of India's leading brokerage and distribution house. LKP is a corporate trading member of Bombay Stock Exchange Limited (BSE), National Stock Exchange of India Limited (NSE), MCX Stock Exchange Limited (MCX-SX). LKP along with its subsidiaries offers the most comprehensive avenues for investments and is engaged in the businesses including stock broking (Institutional and retail), merchant banking, commodity broking, depository participant, insurance broking and services rendered in connection with distribution of primary market issues and financial products like mutual funds etc.

LKP hereby declares that it has not defaulted with any stock exchange nor its activities were suspended by any stock exchange with whom it is registered in last five years. However, SEBI and Stock Exchanges have conducted the routine inspection and based on their observations have issued advice letters or levied minor penalty on LKP for certain operational deviations in ordinary/routine course of business. LKP has not been debarred from doing business by any Stock Exchange / SEBI or any other authorities; nor has its certificate of registration been cancelled by SEBI at any point of time.

LKP offers research services to clients. The analyst for this report certifies that all of the views expressed in this report accurately reflect his or her personal views about the subject company or companies and its or their securities, and no part of his or her compensation was, is or will be, directly or indirectly related to specific recommendations or views expressed in this report.

Other disclosures by LKP and its Research Analyst under SEBI (Research Analyst) Regulations, 2014 with reference to the subject company(s) covered in this report:-

Research Analyst or his/her relative's financial interest in the subject company. (NO)

LKP or its associates may have financial interest in the subject company.

LKP or its associates and Research Analyst or his/her relative's does not have any material conflict of interest in the subject company. The research Analyst or research entity (LKP) has not been engaged in market making activity for the subject company.

LKP or its associates may have actual/beneficial ownership of 1% or more securities of the subject company at the end of the month immediately preceding the date of publication of Research Report.

Research Analyst or his/her relatives have actual/beneficial ownership of 1% or more securities of the subject company at the end of the month immediately preceding the date of publication of Research Report: (NO)

LKP or its associates may have received any compensation including for investment banking or merchant banking or brokerage services from the subject company in the past 12 months.

LKP or its associates may have received compensation for products or services other than investment banking or merchant banking or brokerage services from the subject company in the past 12 months.

LKP or its associates may have received any compensation or other benefits from the Subject Company or third party in connection with the research report.

Subject Company may have been client of LKP or its associates during twelve months preceding the date of distribution of the research report and LKP may have co-managed public offering of securities for the subject company in the past twelve months.

Research Analyst has served as officer, director or employee of the subject company: (NO)

LKP and/or its affiliates may seek investment banking or other business from the company or companies that are the subject of this material. Our salespeople, traders, and other professionals may provide oral or written market commentary or trading strategies to our clients that reflect opinions that are contrary to the opinions expressed herein, and our proprietary trading and investing businesses may make investment decisions that may be inconsistent with the recommendations expressed herein.

In reviewing these materials, you should be aware that any or all of the foregoing, among other things, may give rise to real or potential conflicts of interest including but not limited to those stated herein. Additionally, other important information regarding our relationships with the company or companies that are the subject of this material is provided herein. This report is not directed to, or intended for distribution to or use by, any person or entity who is a citizen or resident of or located in any locality, state, country or other jurisdiction where such distribution, publication, availability or use would be contrary to law or regulation or which would subject LKP or its group companies to any registration or licensing requirement within such jurisdiction. Specifically, this document does not constitute an offer to or solicitation to any U.S. person for the purchase or sale of any financial instrument or as an official confirmation of any transaction to any U.S. person.

Unless otherwise stated, this message should not be construed as official confirmation of any transaction. No part of this document may be distributed in Canada or used by private customers in United Kingdom.

All trademarks, service marks and logos used in this report are trademarks or registered trademarks of LKP or its Group Companies. The information contained herein is not intended for publication or distribution or circulation in any manner whatsoever and any unauthorized reading, dissemination, distribution or copying of this communication is prohibited unless otherwise expressly authorized. Please ensure that you have read "Risk Disclosure Document for Capital Market and Derivatives Segments" as prescribed by Securities and Exchange Board of India before investing in Indian Securities Market. In so far as this report includes current or historic information, it is believed to be reliable, although its accuracy and completeness cannot be guaranteed.

All material presented in this report, unless specifically indicated otherwise, is under copyright to LKP. None of the material, nor its content, nor any copy of it, may be altered in any way, transmitted to, copied or distributed to any other party, without the prior express written permission of LKP