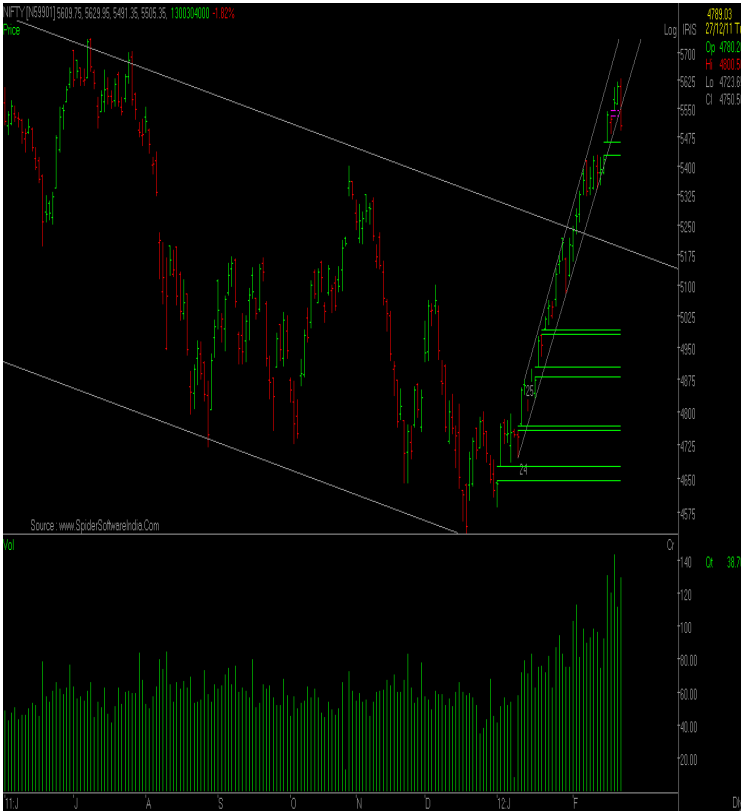


Tech View

LKP Advisory



Rakesh Gandhi

There was a sharp decline from the key resistance of 18500. We had indicated that markets will be viewed with positive bias if it sustains 18500 but, markets slipped immediately after touching that in early morning trade. From yesterday's closing it seems that if 5500 and 18150 is broken we may see further declines. The chart patterns suggest that to regain the upward trajectory markets need to once again close above 5600 for nifty and 18400 for sensdex. On the downside 5450 is key support and fall below that will increase the spate of profit booking. Looking at the chart formation today being the expiry day we may see unusual activity based on open position but, if by weekend nifty sustains below 5450 and sensdex below 18000 we can see sharp decline in next week.

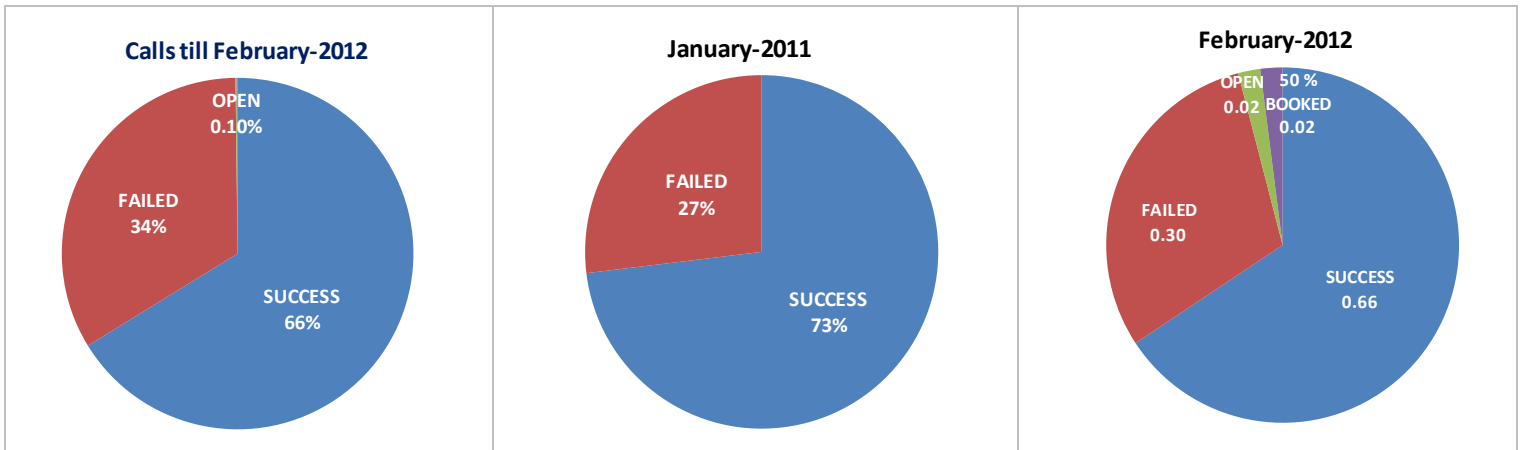
TODAY'S RECOMMENDATION

SCRIP	TENURE	RECO	RATE	STOP LOSS	TARGET
DELTACORP	INTRADAY	SELL-BELOW	78.50	80.50	75.50
CANBK	INTRADAY	SELL-BELOW	525	536	510

IMPORTANT LEVELS FOR THE DAY

INDEX	CLOSE	S2	S1	PIVOTS	R1	R2
SENSEX	18,145	18,000	18,050	18,100	18,200	18,400
NIFTY	5,505	5,460	5,480	5,500	5,535	5,595

LKP ADVISORY PERFORMANCE



LAST 7 TRADING DAYS RECOMMENDATION

Date	SCRIP NAME	TENURE	LONG / SHORT	RATE	SL	TGT	PART	PART DATE	FULL	FULL DATE	ROI	STATUS	CMP
13-Feb	RELCAPITAL	1 day	SHORT	404	410	394			410	10-Feb-12	-1.5%	FAILED	440
13-Feb	GMDCLTD	1 day	LONG	183	181	187			181	13-Feb-12	-1.1%	FAILED	191
13-Feb	ARVIND	1 day	LONG	103	102	106			102	13-Feb-12	-1.5%	FAILED	88
13-Feb	MCLEODRUSS	2 WEEK	LONG	204	195	225	214	13-Feb-12	218	15-Feb-12	5.9%	SUCCESS	211
13-Feb	CROMPGREAV	1 day	LONG	155	153	160			157	13-Feb-12	1.3%	SUCCESS	150
13-Feb	NIFTY	1 day	LONG	5,384	5,368	5,410			5,407	13-Feb-12	0.4%	SUCCESS	5,518
13-Feb	WELCORP	2 WEEK	LONG	137	133	147	142	15-Feb-12	147	16-Feb-12	5.6%	SUCCESS	147
13-Feb	BGREENERGY	BTST	LONG	264	260	275			274	14-Feb-12	3.6%	SUCCESS	341
13-Feb	CROMPGREAV	BTST	LONG	159	156	165			156	14-Feb-12	-1.6%	FAILED	150
14-Feb	TATASTEEL	1 day	LONG	485	478	495			490	14-Feb-12	1.0%	SUCCESS	472
14-Feb	BIOCON	1 day	LONG	293	290	300			290	14-Feb-12	-1.0%	FAILED	286
14-Feb	APIL	1 day	LONG	385	381	395			395	14-Feb-12	2.6%	SUCCESS	388
14-Feb	NIFTY	1 day	LONG	5,425	5,410	5,455			5,410	14-Feb-12	-0.3%	FAILED	5,518
14-Feb	AUROPHARMA	1 day	LONG	112	111	115			115	14-Feb-12	2.2%	SUCCESS	113
14-Feb	GUJFLUORO	2 WEEK	LONG	505	490	540	532	15-Feb-12	497	22-Feb-12	1.9%	SUCCESS	495
14-Feb	BFUTILITIE	BTST	LONG	450	445	460			460	15-Feb-12	2.2%	SUCCESS	429
15-Feb	MCDOWELL-N	1 day	LONG	677	670	690			690	15-Feb-12	1.9%	SUCCESS	574
15-Feb	LT	1 day	LONG	1,400	1,380	1,435			1,435	15-Feb-12	2.5%	SUCCESS	1,421
15-Feb	TATASTEEL	1 day	LONG	491	486	502			495	15-Feb-12	0.8%	SUCCESS	472
15-Feb	INDHOTEL	1 day	LONG	74	73	77			76	15-Feb-12	2.5%	SUCCESS	74
15-Feb	CROMPGREAV	1 day	LONG	158	156	163			156	15-Feb-12	-1.3%	FAILED	150
15-Feb	NIFTY	1 day	SHORT	5,540	5,555	5,510			5,520	15-Feb-12	0.4%	SUCCESS	5,518
15-Feb	JETAIRWAYS	1 day	LONG	336	333	345			345	15-Feb-12	2.7%	SUCCESS	319
15-Feb	INFY	2 WEEK	LONG	2,850	2,760	3,100	2,962	17-Feb-12			3.9%	50% BOOKED	2,945
16-Feb	DLF	1 day	LONG	250	247	256			255	16-Feb-12	1.8%	SUCCESS	240
16-Feb	DELTACORP	1 day	LONG	85	83	88			83	16-Feb-12	-1.8%	FAILED	79
16-Feb	GMDCLTD	2 WEEK	LONG	194	184	225						OPEN	191
16-Feb	ABGSHIP	1 day	LONG	440	436	452			452	16-Feb-12	2.7%	SUCCESS	419
16-Feb	NIFTY	1 day	LONG	5,520	5,505	5,550			5,528	16-Feb-12	0.1%	SUCCESS	5,518
16-Feb	JUBLFOOD	1 day	LONG	1,050	1,035	1,080			1,035	16-Feb-12	-1.4%	FAILED	968
16-Feb	FCH	2 WEEK	LONG	146	140	160			140	22-Feb-12	-4.1%	FAILED	134
16-Feb	FCH	BTST	LONG	150	147	155			147	17-Feb-12	-2.0%	FAILED	134
17-Feb	ICICIBANK	1 day	LONG	980	968	1,000			996	17-Feb-12	1.6%	SUCCESS	962
17-Feb	MERCATOR	1 day	LONG	32	32	33			33	17-Feb-12	2.5%	SUCCESS	29
17-Feb	ABAN	1 day	LONG	560	553	575			553	17-Feb-12	-1.3%	FAILED	517
17-Feb	AZZMES	2 WEEK	LONG	140	132	160			133	22-Feb-12	-5.0%	FAILED	134
17-Feb	RIIL	2 WEEK	LONG	543	523	595						OPEN	516
21-Feb	DLF	1 day	LONG	254	250	262			257	21-Feb-12	1.2%	SUCCESS	240
21-Feb	GODREJIND	1 day	LONG	217	214	222			222	21-Feb-12	2.3%	SUCCESS	236
21-Feb	HINDALCO	1 day	LONG	154	152	158			156	21-Feb-12	1.2%	SUCCESS	148
21-Feb	SINTEX	1 day	LONG	100	98	104			99	21-Feb-12	-1.0%	FAILED	93
21-Feb	NIFTY	1 day	SHORT	5,605	5,620	5,575			5,620	21-Feb-12	-0.3%	FAILED	5,518
21-Feb	KPIT	1 day	LONG	177	174	181			175	21-Feb-12	-1.0%	FAILED	168
21-Feb	GODREJIND	2 WEEK	LONG	228	215	275	242	21-Feb-12			6.1%	50% BOOKED	236
21-Feb	MMTC	1 day	SHORT	840	850	825			838	21-Feb-12	0.2%	SUCCESS	864
21-Feb	KFA	BTST	LONG	26	26	30			28	22-Feb-12	7.7%	SUCCESS	25
22-Feb	TITAN	1 day	LONG	245	241	252			241	22-Feb-12	-1.6%	FAILED	225
22-Feb	VIPIND	1 day	LONG	125	123	129			123	22-Feb-12	-1.6%	FAILED	110
22-Feb	EDUCOMP	1 day	LONG	239	236	245			236	22-Feb-12	-1.3%	FAILED	222
22-Feb	NIFTY	1 day	SHORT	5,520	5,535	5,480			5,510	22-Feb-12	0.2%	SUCCESS	5,518
22-Feb	LOVABLE	1 day	SHORT	408	413	400			400	22-Feb-12	2.0%	SUCCESS	403

* Assuming Rs.100,000 invested in each call & 2 lots in futures contract.

* Success = Closed, Failed = Closed, 50% Profit Booking = Open, Open = Not Closed

PIVOT POINTS

Scrip Name	Close	RB2	RB1	PP	SB1	SB2	Scrip Name	Close	RB2	RB1	PP	SB1	SB2
3IINFOTECH	19	23	21	19	18	16	BOSCHLTD	7693	7898	7800	7722	7643	7546
ABAN	517	600	561	529	498	459	BPCL	624	664	642	624	607	585
ABB	864	933	899	872	845	811	BRFL	260	274	267	261	256	248
ABGSHIP	420	445	432	421	410	396	CAIRN	386	416	401	390	378	364
ABIRLANUVO	863	931	899	874	848	817	CANBK	524	603	565	534	504	466
ACC	1325	1414	1371	1337	1303	1261	CENTRALBK	105	115	111	107	103	98
ADANIENT	387	459	426	398	371	338	CENTURYTEX	315	362	340	323	305	284
ADANIPOWER	144	169	157	148	139	127	CESC	269	308	290	275	260	242
ADANIPORTS	83	108	96	87	78	67	CHAMBLFERT	87	93	90	88	85	82
ALBK	190	229	211	196	182	164	CIPLA	318	331	325	320	315	308
ALOKTEXT	22	25	23	22	21	20	COALINDIA	322	339	331	324	318	310
AMBUJACEM	165	181	173	167	161	154	COLPAL	1006	1027	1015	1006	997	985
ANDHRABANK	124	139	132	127	121	114	COREEDUTEC	275	283	279	276	272	268
APIL	388	450	422	399	376	348	CROMPGREAV	151	175	164	154	145	134
APOLLOTYRE	79	86	83	80	77	73	CUMMINSIND	451	486	469	455	442	425
AREVAT&D	190	212	202	193	185	174	DABUR	105	109	107	105	103	101
ARVIND	88	108	99	91	83	74	DCB	46	55	51	48	44	41
ASHOKLEY	28	31	30	29	27	26	DCHL	48	59	54	49	45	40
ASIANPAINT	3074	3166	3117	3076	3036	2987	DELTACORP	78	95	87	81	75	67
AUROPHARMA	114	132	123	116	109	100	DENABANK	89	104	97	91	85	78
AXISBANK	1216	1361	1293	1238	1183	1114	DHANBANK	62	68	65	63	61	58
BAJAJ-AUTO	1804	1884	1843	1810	1777	1736	DISHTV	61	75	69	64	59	53
BAJAJHIND	34	39	37	35	33	31	DIVISLAB	739	784	761	743	725	702
BAJAJHLDNG	803	838	820	806	791	774	DLF	238	280	261	245	230	210
BALRAMCHIN	52	58	55	53	50	48	DRREDDY	1647	1685	1666	1651	1635	1616
BANKBARODA	818	926	875	835	794	744	EDUCOMP	224	262	244	229	214	196
BANKINDIA	365	443	407	378	349	313	EKC	41	52	47	43	39	33
BATAINDIA	668	743	708	680	651	616	ESCORTS	82	95	89	84	79	73
BEL	1495	1546	1520	1499	1478	1452	ESSAROIL	69	79	74	70	66	61
BEML	641	678	660	645	630	612	EXIDEIND	131	145	138	133	127	121
BFUTILITIE	426	487	458	435	411	383	FEDERALBNK	423	475	451	431	412	388
BGREENERGY	339	404	372	345	319	286	FINANTECH	875	1002	941	891	841	779
BHARATFORG	300	342	322	306	289	269	FORTIS	111	121	116	112	108	103
BHARTIARTL	347	381	364	350	336	319	FSL	12	15	14	13	11	10
BHEL	307	349	329	312	295	274	GAIL	375	394	385	377	370	360
BHUSANSTL	397	418	408	399	391	381	GESHIP	249	280	265	254	242	228
BIOCON	286	306	296	289	281	272	GITANJALI	406	429	413	400	387	370
BOMDYEING	459	523	491	465	439	407	GITANJALI	406	429	413	400	387	370

Scrip Name	Close	RB2	RB1	PP	SB1	SB2	Scrip Name	Close	RB2	RB1	PP	SB1	SB2
GLAXO	2083	2120	2102	2087	2072	2054	IOB	107	116	112	108	105	101
GMDCLTD	190	210	199	190	181	171	IOC	277	292	283	277	270	261
GMRINFRA	29	37	33	30	27	23	IRB	187	230	209	193	176	156
GODREJIND	234	251	243	236	229	221	ITC	209	213	210	208	206	203
GRASIM	2791	2963	2875	2803	2732	2644	IVRCLINFRA	56	67	62	58	54	50
GSPL	76	87	82	78	73	68	JETAIRWAYS	320	388	357	332	307	276
GTL	55	67	62	57	53	47	JINDALSAW	154	176	166	157	149	138
GTOFFSHORE	117	144	132	122	111	99	JINDALSTEL	613	679	648	624	599	568
GUJFLUORO	494	533	514	499	483	464	JINDALSWHL	896	1080	996	929	861	778
GVKPIL	18	22	20	18	17	15	JISLJALEQS	113	130	122	115	109	101
HAVELLS	526	574	551	532	513	490	JPASSOCIAT	80	90	86	82	78	73
HCC	29	36	33	30	27	24	JPOWER	45	50	48	46	44	41
HCLTECH	492	510	500	492	483	473	JSWENERGY	65	81	73	67	61	53
HDFC	702	736	720	707	694	678	JSWISPAT	14	18	16	15	13	12
HDFCBANK	531	549	540	532	525	515	JSWSTEEL	812	937	878	831	784	726
HDIL	120	148	135	124	114	100	JUBLFOOD	968	1067	1019	980	940	892
HEROMOTOCO	2140	2253	2199	2155	2111	2057	KFA	25	31	28	26	23	20
HEXAWARE	110	120	115	111	108	103	KOTAKBANK	567	597	583	571	559	545
HINDALCO	148	166	158	151	144	136	KSOILS	9	12	11	10	9	7
HINDOILEXP	136	164	151	141	130	117	KTKBANK	102	117	110	104	98	91
HINDPETRO	288	320	304	292	280	265	LICHSGFIN	259	287	274	264	253	240
HINDUNILVR	379	390	384	379	375	369	LITL	20	28	24	21	18	14
HINDZINC	139	150	144	140	135	129	LT	1423	1504	1465	1434	1403	1364
HOTELEELA	36	41	39	37	35	33	LUPIN	461	504	484	467	451	431
IBREALEST	73	94	84	76	68	58	M&M	743	790	767	748	730	706
ICICIBANK	958	1020	990	966	942	913	MARUTI	1306	1372	1335	1306	1276	1239
IDBI	110	128	119	113	106	98	MAX	173	192	183	176	168	159
IDEA	91	100	95	92	88	83	MCLEODRUSS	212	244	229	217	206	191
IDFC	145	162	154	147	141	133	MCDOWELL-N	574	803	684	589	493	375
IFCI	45	51	48	46	44	42	MERCATOR	29	37	34	31	28	24
IGL	347	364	354	345	337	326	MOSERBAER	20	23	21	20	19	18
INDHOTEL	74	79	77	75	72	70	MPHASIS	409	431	420	411	402	391
INDIACEM	101	109	105	102	99	94	MRF	9411	10743	10115	9606	9097	8469
INDIAINFO	74	95	85	77	69	59	MRPL	68	79	74	69	65	60
INDIANB	238	267	253	241	230	215	MTNL	32	39	36	33	30	27
INDUSINDBK	300	336	319	305	292	275	NATIONALUM	62	73	68	63	59	53
INFY	2952	3073	3005	2950	2896	2828	NCC	60	70	65	61	57	52
INGVYSYABK	352	373	363	356	348	338	NEVELILIG	92	108	101	95	89	82

Scrip Name	Close	RB2	RB1	PP	SB1	SB2	Scrip Name	Close	RB2	RB1	PP	SB1	SB2
NHPC	22	23	23	22	21	21	SKUMARSYNF	36	42	39	37	35	32
NMDC	188	208	199	191	183	174	SOBHA	298	322	309	299	288	275
NTPC	183	193	188	184	180	175	SOUTHBANK	27	29	28	27	26	25
OFSS	2121	2357	2242	2150	2057	1942	SREINFRA	33	41	37	34	31	27
OIL	1306	1348	1328	1312	1296	1276	SRTRANSFIN	587	639	612	590	567	540
ONGC	293	316	305	295	286	274	STER	120	142	132	123	115	104
ONMOBILE	76	89	83	78	73	67	STRTECH	42	51	47	43	40	35
OPTOCIRCUI	279	305	292	281	271	258	SUNPHARMA	549	562	555	549	543	536
ORCHIDCHEM	174	202	189	178	168	154	SUNTV	331	349	339	330	322	311
ORIENTBANK	287	355	324	298	273	241	SUZLON	28	35	32	29	27	24
PANTALONR	179	215	198	184	171	153	SYNDIBANK	107	129	118	110	102	92
PATELENG	112	137	126	116	107	95	TATACHEM	354	389	372	359	345	328
PATNI	472	483	476	471	465	459	TATACOMM	254	288	268	251	235	214
PETRONET	164	183	174	167	160	152	TATAGLOBAL	117	128	123	118	113	107
PFC	202	230	217	206	195	181	TATAMOTORS	268	284	276	270	264	256
PIRHEALTH	444	466	455	447	439	428	TATAMTRDVR	135	151	143	137	130	122
PNB	1027	1144	1089	1045	1001	946	TATAPOWER	111	124	118	113	108	102
POLARIS	157	174	166	159	153	145	TATASTEEL	471	518	496	478	461	439
POWERGRID	110	115	113	111	109	107	TCS	1252	1302	1273	1249	1226	1197
PRAJIND	84	99	92	87	81	74	TECHM	632	700	668	642	616	584
PTC	64	72	68	65	63	59	TITAN	226	269	249	233	218	198
PUNJLLOYD	59	72	66	61	56	50	TRIVENI	19	24	21	20	18	15
RANBAXY	438	467	453	442	430	416	TTKPRESTIG	2854	3196	3037	2908	2779	2620
RAYMOND	364	423	395	372	350	322	TTML	16	20	18	17	16	14
RCOM	98	121	110	101	92	80	TULIP	95	122	110	99	89	77
RECLTD	218	268	245	226	207	183	TVSMOTOR	51	57	54	52	49	47
RELCAPITAL	443	514	481	455	428	395	UCOBANK	85	99	92	86	81	74
RELIANCE	833	878	857	840	823	803	ULTRACEMCO	1481	1509	1495	1484	1472	1458
RELINFRA	614	685	652	625	598	565	UNIONBANK	250	293	273	257	241	221
RENUKA	37	47	42	39	35	30	UNIPHOS	151	168	160	153	146	138
ROLTA	92	110	102	95	88	80	UNITECH	33	42	38	34	30	26
RPOWER	123	140	132	125	119	111	VIDEOIND	175	192	184	177	171	163
RUCHISOYA	94	102	98	95	91	87	VIJAYABANK	63	73	68	64	60	56
SAIL	106	118	113	108	104	98	VIPIND	111	143	128	116	104	89
SBIN	2255	2641	2464	2320	2177	1999	VOLTAS	103	130	117	107	97	84
SCI	72	82	77	74	70	65	WELCORP	148	163	156	150	144	137
SESAGOA	236	276	258	243	228	210	WIPRO	443	460	451	445	438	429
SIEMENS	809	863	836	814	793	766	YESBANK	346	390	370	354	337	317
SINTEX	93	106	100	95	90	83	ZEEL	126	142	134	128	122	115

HOW TO TRADE PIVOT POINTS

PP = Pivot Point

RB1 = Fibonacci Resistance 1

RB2 = Fibonacci Resistance 2

SB1 = Fibonacci Support 1

SB2 = Fibonacci Support 2

If a stock opens above Pivot Point, go long with a stop loss of SB1 and SB2, for a target of RB1 and RB2.

Similarly, if a stock opens below Pivot Point, go short with a stop loss of RB1 and RB2, for a target of SB1 and SB2.

DISCLAIMER:

The information in this document has been printed on the basis of publicly available information, internal data and other reliable source believed to be true and is for general guidance only. While every effort is made to ensure the accuracy and completeness of information contained, the company makes no guarantee and assumes no liability for any errors or omissions of the information. No one can use the information as the basis for any claim, demand or cause of action. LKP Securities Ltd., and affiliates, including the analyst who have issued this report, may, on the date of this report, and from time to time, have long or short positions in, and buy or sell the securities of the companies mentioned herein or engage in any other transaction involving such securities and earn brokerage or compensation or act as advisor or have other potential conflict of interest with respect to companies mentioned herein or inconsistent with any recommendation and related information and opinions. LKP Securities Ltd., and affiliates may seek to provide or have engaged in providing corporate finance, investment banking or other advisory services in a merger or specific transaction to the companies referred to in this report, as on the date of this report or in the past.
